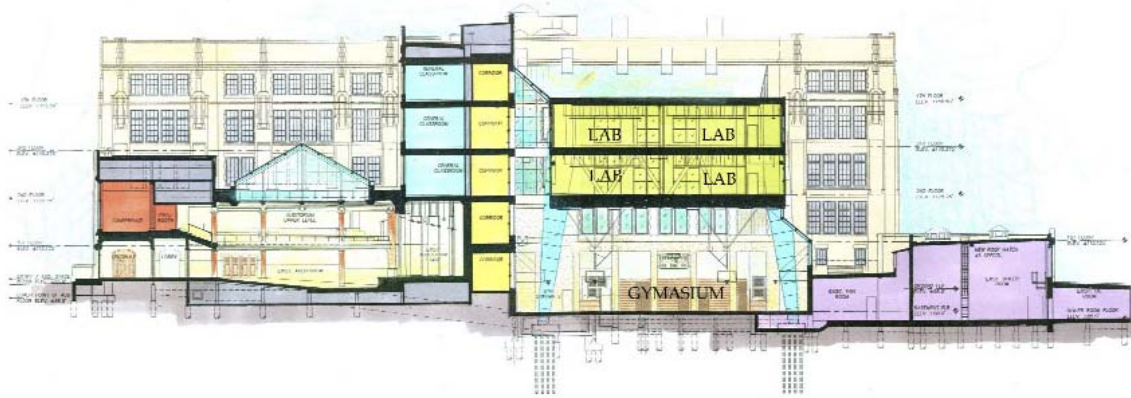


LF ENGINEERING, PLLC

200 JOHN JAMES AUDUBON PKWY, SUITE 104, BUFFALO, NY 14228
P 716.688.3060 F 716.688.3061
WWW.LFENGINEERS.COM



Rendering from HHL Architects , Project Architect

Hutchinson Central High School, Buffalo Public School #304 Addition and Renovations Buffalo, New York

LF Engineering provided the structural design and engineering for the 202,000 SF reconstruction project that was completed in the fall of 2006. The total construction cost was approximately \$18 million. LF Engineering was a part of the design team and followed the project from conceptual design through to building occupation.



Images from HOHL Industrial Services Inc.



The three-story addition includes a gymnasium with two levels of classrooms above it. The entire 3-story addition is supported by four truss-type columns to provide the large open space for the gymnasium at the ground floor. The four truss-type

columns are supported on a micro-pile system of foundations. Micro-piles were utilized as a solution to the limited construction site space due to the existing structure and the lack of space to construct a traditional foundation system. This was the first application of a micro-pile foundation system in western New York.

**STRUCTURAL AND CIVIL
QUALITY. DEPENDABLE. PROFESSIONAL.**